

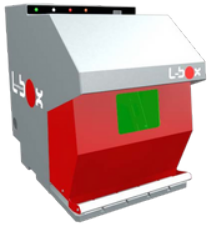
MARKING AND TRACEABILITY SOLUTIONS



our laser marking systems

DRILLMEX

WORKSTATION



L-Box

SIMPLE & VERSATILE

- Ergonomics and visibility
- Internal working area

area of 370 x 450 mm
Marking windows: 100 x 100 mm or 170 x 170 mm



XL-Box

LARGE CAPACITY & PRODUCTIVITY

- Automatic door and motorized column
- Internal working area

area of 570 x 564 mm



XXL-Box

LARGE VOLUME & MODULARITY

- The largest volume on the market
- Modular marking area

INTEGRATED



i104 EASY 20-30W

Marking windows: 60 x 60 mm - 100 x 100 mm - 170 x 170 mm

VERSATILE

- Excellent value for money
- Marking on all types of materials and difficult surface conditions

i104 EASY 50W

Marking windows: 60 x 60 mm - 100 x 100 mm - 170 x 170 mm

HIGH POWER & HIGH SPEED

- Deep and ultra fast marking
- Easy integration & reduced maintenance

i104 HD 20W

Marking windows: 60 x 60 mm - 100 x 100 mm - 170 x 170 mm

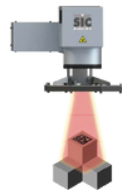
HIGH CONTRAST MARKING

- Marking quality with high contrast
- Multi applications (metals, plastics ...)

OPTIONS

INTEGRATED 2D CODE READING

SMART VISION



MULTI-LEVEL MARKING

AUTOFOCUS



Marking on rough casting



Logo on anodised part



Circular marking on steel



Marking on polyamide

our scribing marking machines

INTEGRATED



e10 R i63 s / i124 s

Marking windows: 60 x 30 mm (i63s) - 120 x 60 mm (i124s)

COMPACT & SILENT

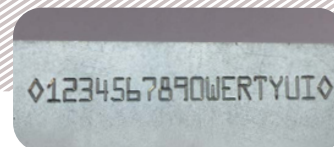
- Aesthetic marking
- Suitable for light and deep marking



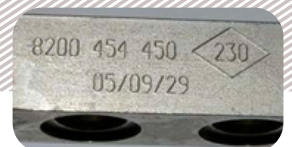
Deep marking on steel



Radiant marking



VIN marking



Light marking

our dot peen marking machines

COLUMN-MOUNTED



ec1

Marking window:
120 x 100 mm
SIMPLE & COMPACT
• Easy programming



e10 c153 / c153 za / c303

Marking windows:
160 x 100 mm (c153/c153 za) - 300 x 150 mm (c303)
ROBUST & COMPLETE
• Motorised or manual column

PORTABLE

e-mark / e-mark XL

Marking windows:
60 x 25 mm - 120 x 40 mm (XL)
CORDLESS MARKING SYSTEM •
Integrated e1 controller



e-touch / e-touch XL

Marking windows:
60 x 25 mm - 120 x 50 mm (XL)
LIGHT & COMPACT
• Intuitive Software

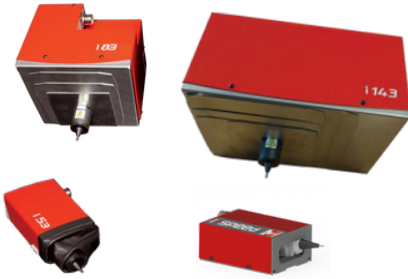


e10 p63 / p123

Marking windows:
60 x 25 mm (p63)
120 x 25 mm (p123)
ADAPTABLE & FUNCTIONAL
• High marking power



INTEGRATED



e10 R i-speed / i53 / i83 / i143e-smart

Marking windows:
50 x 20 mm (i-speed & i53)
80 x 70 mm (i83)
150 x 100 mm (i143)
HIGH SPEED & COMPACT
• Easy integration

Marking window:
50 x 20 mm

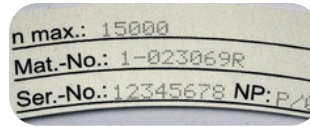
EASY INTEGRATION
• All in one: the first Stand Alone machine that integrates its controller



Deep marking



Circular marking



Nameplate



Datamatrix on aluminium

IDENTIFICATION & reading systems



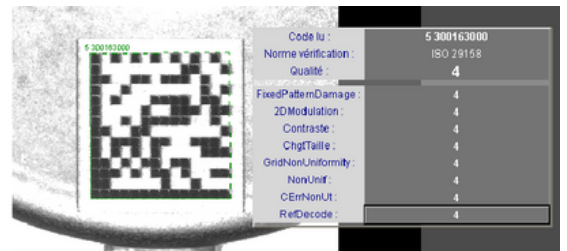
Handheld reader



Datamatrix reader



Dedicated vision system



Traceability software

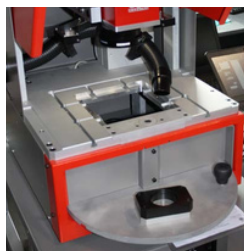
custom SOLUTIONS



VIN Marking



Plate loader system



Marking station with turntable



Standalone marking station

DESIGN OFFICE
• Mechanical
• Software development
• Process automation
• Industrial vision